



# HOSHIZAKI

## CERTIFICATION



HACCP International



ISO9001



Compliant with IEC60335-2-89 Standard

## HF-188MC-SLD

### UPRIGHT LONG SOLID DOOR FREEZER



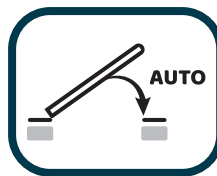
### Key Features



Lower running cost



Powerful cooling performance



Self Closing Door



Removal door gaskets



Food Guard Shelf



Round Interior Corners



Large and clear display



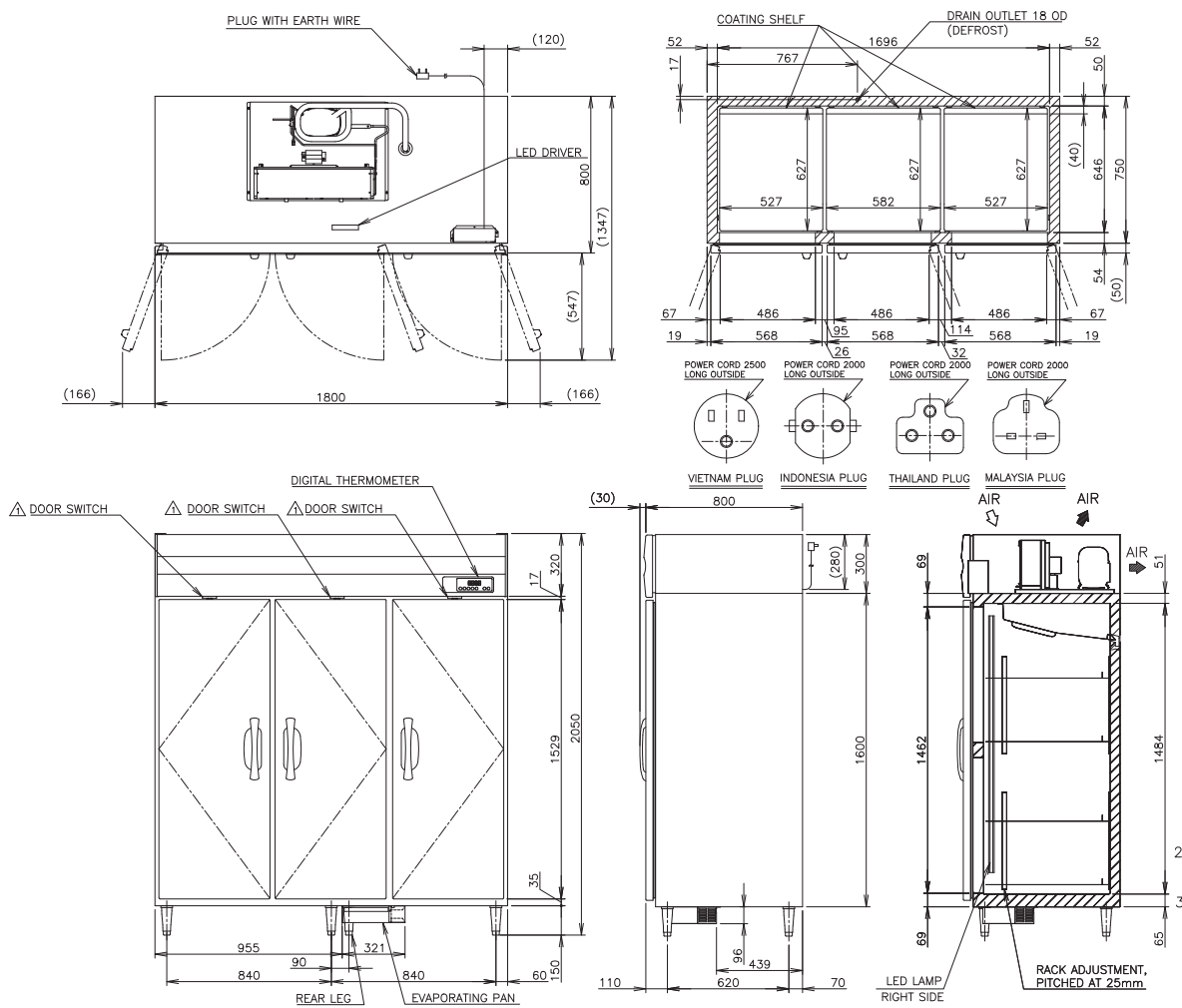
Drainage-Free Design



LED lighting



## Dimensions & Specifications



MODEL	HF-188MC-SLD
POWER SUPPLY	1 Phase 220-240V 50Hz Capacity: 1.19kVA (5.40A)
ELECTRIC CONSUMPTION	764W
TEMPERATURE CONTROL	-25 to -7°C
STORAGE CAPACITY	1656L
WEIGHT	Net: 186kg (Gross: Approx. 227kg)
OUTSIDE DIMENSIONS	1800mm(W)× 800mm(D)×2050(-2080)mm(H)
PACKAGE	Carton(Wooden Pallet): 1860mm(W)×900mm(D)×2075mm(H)
NUMBER OF SHELVES	12
REFRIGERANT	R290
OPERATING CONDITIONS	Ambient Temperature: 5 - 38°C, Voltage Range: Rated Voltage ±6%



# HOSHIZAKI

PT. HOSHIZAKI INDONESIA

